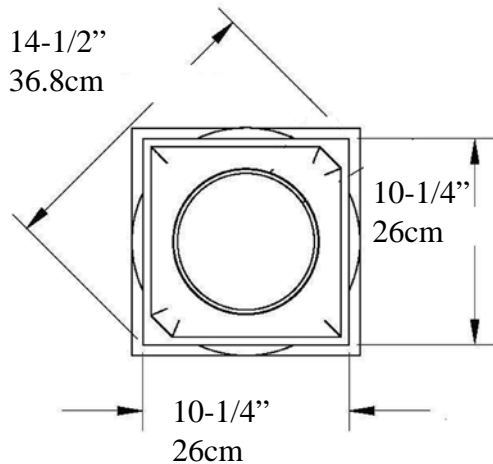




Tuscan Non-Tapered Column

IPTUS0808SNT-TCTB FRP-PolyComp™

Tuscan Capital EconPolymert™

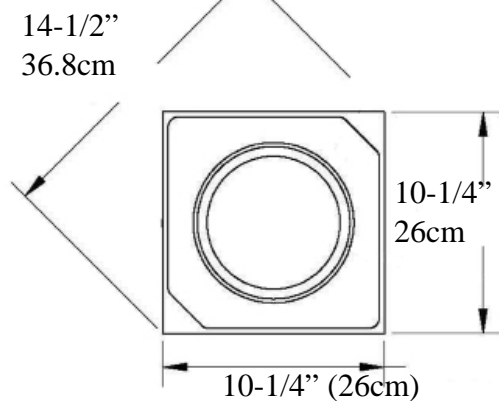


Cap 4" (10cm)

Top of Shaft
Minimum
Inside Diameter
5-1/4" (13.34cm)

Outside Diameter
7-5/8" (19.37cm)

Tuscan Base EconPolymert™



Bottom of Column
Outside Diameter
7-5/8"
19.37cm

Optional Cuts

A B C D



A= Half column

B = 3/4 Outside Corner

C = Wall Cover Engaged

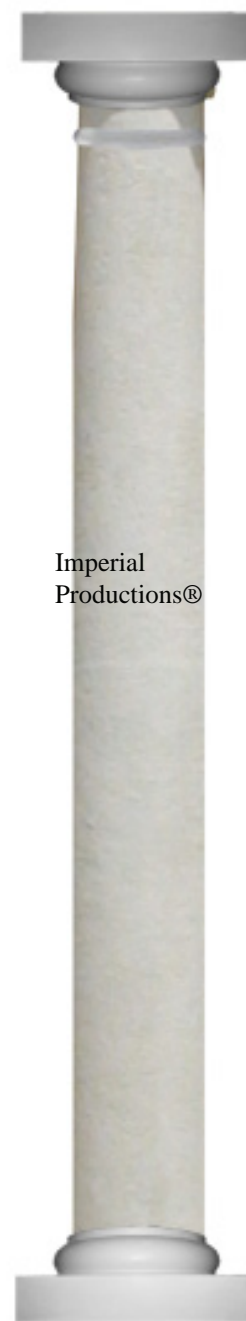
D = 1/4 Column Inside Corner

E = Engaged any percentage

Base & Plinth =>
4" (10cm)

=>

=<



<=

Total
Height

8 Feet
(96")
2.438
metre

Imperial
Productions®

Shaft weight 61 lbs (27.6kg)
Center Loads to 10,000lbs (4.53m tons)

* *assembly required, drawing not to scale*

* *For Load Application check with your structural engineer for suitability in your local area*

* All specifications subject to change without notice, Final products & Measurements may vary from this brochure



Imperial Productions®

Imperial Productions & Distribution Inc.

email sales@imperialproductions.com

1-800-399-7585 +1-416-264-6096

copyright 2016 MRDCI All Rights Reserved

NOV-25



Custom Request (Download & Fill-in)

sales@imperialproductions.com IPTUS0808SNT-TCTB

Name _____

Contact: _____

Phone # _____

Email: _____

Bill to Address _____
_____ ZIP/PC _____

Ship to Address _____
_____ ZIP/PC _____

All deliveries shipped with insurance

Specify the type of Delivery Required Enter Letter => _____

a) Residential

b) Residential with tailgate

c) Commercial with Loading Dock

d) Commercial Curbside Delivery

A) Whole How Many _____

B) Split for Post Wrap How Many _____

To Wrap Round Post Size _____ Square Post Size _____

How are they split _____

C) Split for Pilaster How Many _____

* Possible Limitations due to Quantity Requested and/or Application



Imperial Productions®

Imperial Productions & Distribution Inc.

email sales@imperialproductions.com copyright 2016 MRDCI All Rights Reserved

1-800-399-7585 +1-416-264-6096