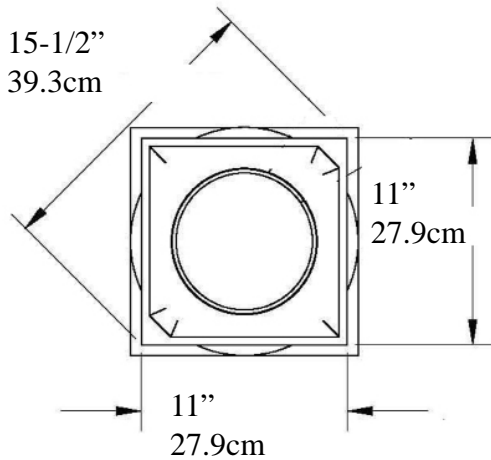




Tuscan Tapered Column

IPTUS0510-TCTB FRP-PolyComp™

Tuscan Capital ArchPolymer™



Cap 3" (7.62cm) =>

Top of Shaft
Minimum
Inside Diameter
6-1/4" (15.8cm)

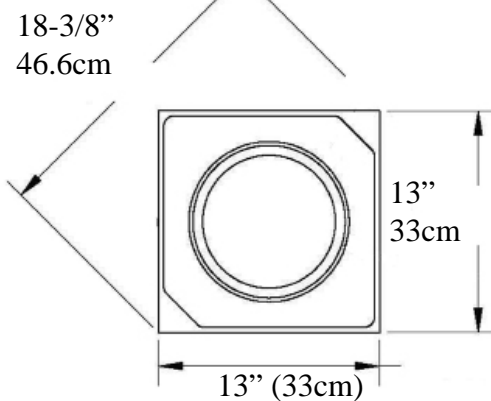
Outside Diameter
7-1/2" (19cm)

<= |

Total Height

5 Feet
(60")

Tuscan Base ArchPolymer™



Bottom of Column
Outside Diameter
9-5/8"
24.4cm

1.524m

Optional Cuts

A B C D



A = Half column
B = 3/4 Outside Corner
C = Wall Cover Engaged
D = 1/4 Column Inside Corner
E = Engaged any percentage

Torus & Plinth =>
5" (12.7cm)



Imperial Productions®

Weight Shaft 53 lb (24 Kg)
Center Loads to 14,000lbs (6.35m tons)

drawing not to scale

- * assembly required, drawing not to scale Loads must be Centered on the Shaft
- * Sold as a building Component - Intergration Hardware by others
- * For Load Application check with your structural engineer for suitability in your local area
- * All specifications subject to change without notice, Final products & Measurements may vary from this brochure E/OE



Imperial Productions®

Imperial Productions & Distribution Inc

email sales@imperialproductions.com copyright 2016 MRDCI All Rights Reserved

1-800-399-7585 +1-416-264-6096

SEP-25



Custom Request (Download & Fill-in)

sales@imperialproductions.com IPTUS0510S-TCTB

Name _____

Contact: _____

Phone # _____

Email: _____

Address _____
_____ ZIP/PC _____

FRP-PolyComp™ A Composite Gypsum, Fiberglass, Marble Chips, Prime & Paint by others

(Interior/Exterior)

of Whole Units _____ # of Split Units _____

Type of Split enter Letter _____

Optional Cuts

A

B

C

D



A= Half column

B = 3/4 Outside Corner

C = Wall Cover Engaged

D = 1/4 Column Inside Corner

E = Engaged any percentage

* Possible Limitations due to Quantity Requested and/or Application



Imperial Productions®

1-800-399-7585 +1-416-264-6096

Imperial Productions & Distribution Inc.

email sales@imperialproductions.com copyright 2016 MRDCI All Rights Reserved