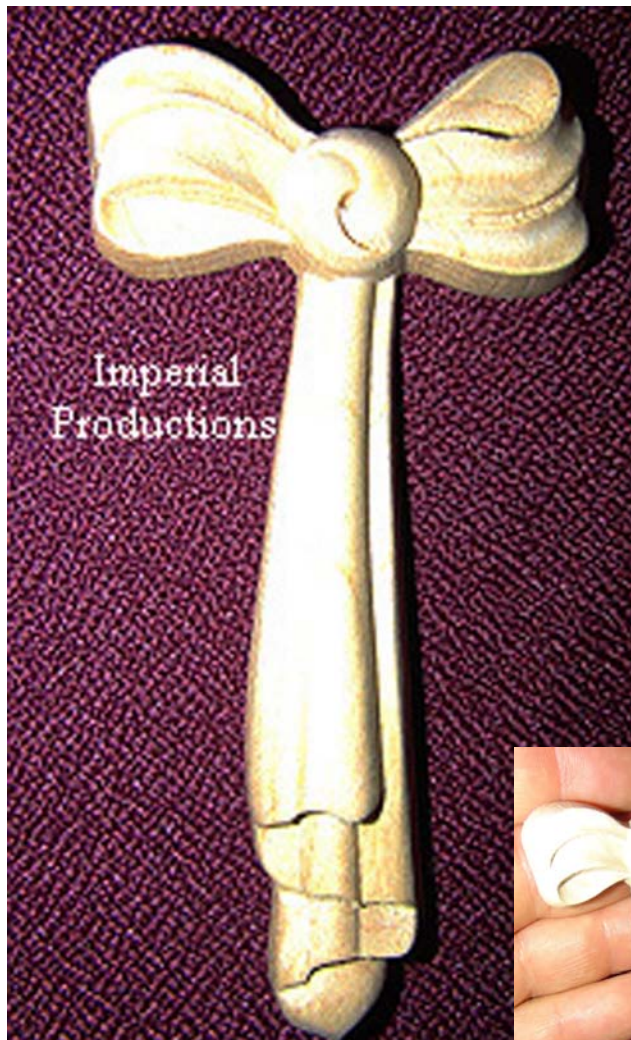




Appliqué IPCVA1007 for Walls, Cabinetry Mantels, Ceilings



Height 3-1/2" (8.8cm)
Width 1-3/4" (4.4cm)
Projection 3/8" (.95cm)



Available Materials

Hardwoods

Red Oak, Cherry, Maple
Alder, White Oak, or specified
other species

ArchPolymer™

Artificial wood, White Primed
Rot, Insect, Water Resistant
Interior & Exterior Use

GRG-NeoPlaster™

Re-enforced Fiber Plaster
Primed by others
Interior Use only

GFRC-Zeament™

Concrete & Fiberglass
Primed by others
Interior & Exterior Use

Flexible ResinMold®

Arches, Straight Lengths
Concave & Convex Curves
Water, Rot, Insect Resistant
Flexible Synthetic Polymer
Memory keeps shape
Exterior or Interior Applications
Paint or Stain

** assembly required, drawing not to scale*

** All specifications subject to change without notice, Final products & Measurements may vary from this brochure*



Imperial Productions®

1-800-399-7585 +1-416-264.6096

Imperial Productions & Distribution Inc.

email sales@imperialproductions.com copyright 2016 MRDCI All Rights Reserved



Request for Pediment Quote

Download and Auto Fill IPCVA1007

Name / Company _____

Contact Name: _____

Phone # _____ Email: _____

Bill To Address

ShipTo Address

ZIP/PC _____

ZIP/PC _____

Product Code IPCVA1007

How Many Units _____

1) Residential

2) Commercial

Fill in _____

Material Enter Letter _____

Hard Maple (A) Red Oak (B)

Alder (C) Cherry (D)

Walnut (E) White Oak (F)

Basswood (G)

Notes: _____

ArchPolymerTM (H)

ArchPolymerTM Fire Rated (i)

GRG-NeoPlaster (j)

GFRC-ZeamentTM (K)

Date: _____



Imperial Productions®

1-800-399-7585 +1-416-264-2096

Imperial Productions & Distribution Inc.

email sales@imperialproductions.com copyright 2016 MRDCI All Rights Reserved