

Attic Bases

Standard or
Custom Sizes



www.imperialproductions.com 800-399-7585

Imperial Productions & Distribution Inc
email sales@imperialproductions.com

Toronto / New York

copyright 2018 MRDCI All Rights Reserved

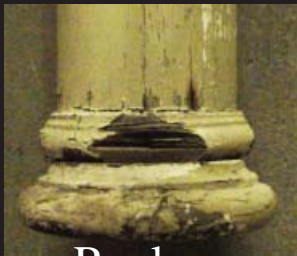
Vol 8: Sept-18



Custom Attic Base

Made from Solid Hardwood

Martin Richards Design
COLLECTION



Replacements to Exact sizes

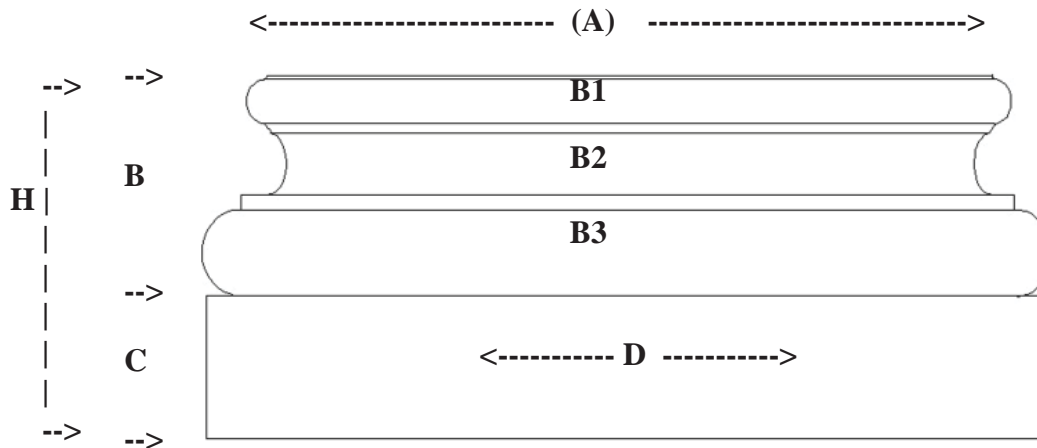
Example: Attic with optional column bottom

A) Top Diameter _____ Quantity: _____

B) Turned Area Height _____
Micro Heights: B1: _____ B2:(cove) _____ B3: _____

C) Square Height _____ D) Square Width _____ E) Depth _____

H) Total Height of all parts: _____



ATTIC BASE (2 Parts Solid Wood)

Circle Hardwood
Interior Use

Paint Grade:
Basswood
Maple
AmPoplar

Stain Grade:
Sap Maple
Red Oak / White Oak
Alder
Cherry
Beech
Walnut
African Mahogany
Ash
Yellow Birch

Exterior Use

Knotty Pine
White Pine
Clear Pine
Western Red Cedar
White Oak

Company Name: _____ Contact: _____

Ship to Address: _____ Phone: _____

_____ Fax: _____

Email: _____



www.imperialproductions.com 1-800-399-7585

Imperial Productions & Distribution Inc Toronto / New York

email sales@imperialproductions.com copyright 2016 MRDCI All Rights Reserved

Vol 8: Sept 18



Custom Hollow Attic Base

Made from 3 Non Wood Materials

Martin Richards Design
COLLECTION

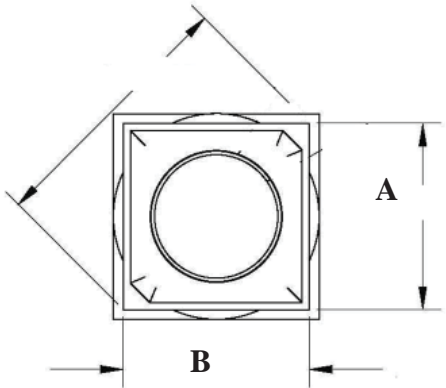


From this... To This

Replacements to Exact sizes

Circle Material: ArchPolymertm
GRG-NeoPlastertm
Zeamentm (GFRC)

How Many _____



A) _____ B) _____

C) Height of Round _____

D) Height of Square Plinth _____

H) Hole Size _____ To Wrap: _____



Company Name: _____

Contact: _____

Ship to Address: _____

Phone: _____

Fax: _____

Email: _____



www.imperialproductions.com 1-800-399-7585

Imperial Productions & Distribution Inc Toronto / New York

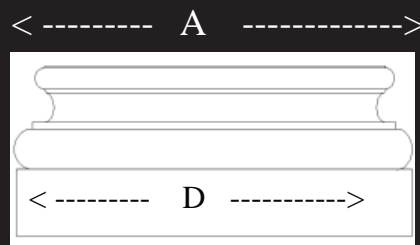
email sales@imperialproductions.com copyright 2016 MRDCI All Rights Reserved

Vol 8: Sept 18
Attic Page 3

Standard Attic Bases



----->
H
----->



Standard made from solid Hardwoods

Item #	Top Flat (A)	Square Base (D)	Total Height (H)	Prices & Brochure Links
IPWAB04	4-1/2" (10.1cm)	5-1/4" x 5-1/4" (13.3cm)	2-1/4"	click for prices
IPWAB05	5-1/2" (13.9cm)	6-1/2" x 6-1/2" (16.5cm)	2-3/4" (6.98cm)	click for prices
IPWAB06	6-1/2" (16.5cm)	7-7/8" x 7-7/8" (20cm)	3-1/4" (8.25cm)	click for prices
IPWAB08	8-1/2" (20.3cm)	10" x 10" (25.4cm)	4-1/4" (10.79cm)	click for prices
IPWAB10	10-1/2" (26.6cm)	12-1/2" x 12-1/2" (31.7cm)	5-1/4" (13.33cm)	click for prices
IPWAB12	12-1/2" (31.7cm)	14-1/2" x 14-1/2" (36.8cm)	6-1/4" (15.87cm)	click for prices
IPWAB14	14-1/2" (36.8cm)	17" x 17" (43.1cm)	7-1/4" (18.41cm)	click for prices



Standard made from ArchPolymer™ GRG-NeoPlaster™ GFRC (Concrete)

Item#	A) Inside Hole	D) Square	H) Height	Prices & Brochure Links
IPATTC100	7-11/16" (19.5cm)	11" (27.9cm)	5-1/4" (13.33cm)	click for prices
IPATTC120	8-3/16" (20.8cm)	10-3/4" (27.3cm)	4-3/8" (11.1cm)	click for prices
IPATTC101	9-3/4" (24.7cm)	12-7/8" (32.7cm)	6-1/4" (15.8cm)	click for prices
IPATTC121	10-3/16" (25.8cm)	13-7/16" (34.1cm)	5-1/2" (13.9cm)	click for prices
IPATTC102	11-1/2" (29.2cm)	15-1/4" (38.7cm)	6-1/4" (15.8cm)	click for prices
IPATTC103	11-3/4" (29.8cm)	15-3/8" (39cm)	7-1/4" (18.4cm)	click for prices
IPATTC104	12" (30.4cm)	16-1/8" (40.9cm)	6-3/4" (17.1cm)	click for prices
IPATTC122	12-3/16" (30.9cm)	15-15/16" (38.9cm)	6-3/8" (16.1cm)	click for prices



No Rot: an Artificial Wood with the same consistency as White Pine

Standard made from EconPolymer™

Item#	A) Inside Hole	D) Square	H) Height	Prices & Brochure Links
IPAB8	7-3/4" (19.6cm)	10-1/2" (26.6cm)	4-3/8" (11.1cm)	click for prices
IPAB10	Fits 9-5/8" (24.4cm)	13" (33cm)	5-1/2" (13.9cm)	click for prices
IPAB12	Fits 11-5/8" (29.5cm)	16" (40.6cm)	6-1/2" (16.5cm)	click for prices
IPAB14	Fits 13-5/8" (34.6cm)	18-5/8" (47.3cm)	9-1/16" (23cm)	click for prices
IPAB16	15-1/2" (39.3cm)	21-1/8" (53.6cm)	10-1/8" (25.7cm)	click for prices
IPAB18	17-1/2" (44.4cm)	24-1/4" (61.5cm)	11-3/8" (28.8cm)	click for prices
IPAB20	19-1/2" (49.5cm)	27" (68.5cm)	12-7/8" (32.7cm)	click for prices
IPAB22	Fits 21-1/2" (54.6cm)	29-3/4" (75.5cm)	14-1/4" (36.1cm)	click for prices
IPAB24	Fits 23-1/2" (59.6cm)	32-1/2" (82.5cm)	15-3/8" (39cm)	click for prices
IPAB30	Fits 30" (76.2cm)	40-1/2" (102.8cm)	19-1/4" (48.8cm)	click for prices
IPAB36	Fits 36" (91.4cm)	48-3/4" (123.8cm)	23-1/2" (56.6cm)	click for prices



No Rot: Fiberglass 25% Polyester Resin 70% Calcium Carbonate 5% Marble Chips

Standard made from PolyCompt™ (an FRP Product)

Item #	A) Inside Hole	D) Square	H) Height	Prices & Brochure Links
IPPCAB08	7-3/4" (19.6cm)	10-3/8" (26.3cm)	4-5/8" (11.7cm)	click for prices
IPPCAB10	9-7/8" (25cm)	13" (33cm)	5-5/8" (14.2cm)	click for prices
IPPCAB12	12" (30.4cm)	15-7/8" (40.3cm)	6-3/8" (16.1cm)	click for prices
IPPCAB14	14-3/8" (36.5cm)	19-1/4" (48.8cm)	8-3/8" (21.2cm)	click for prices
IPPCAB16	16" (40.6cm)	21" (53.3cm)	8-3/4" (22.2cm)	click for prices
IPPCAB18	17-3/4" (45cm)	24" (60.9cm)	10-1/4" (26cm)	click for prices
IPPCAB20	20-1/8" (51.1cm)	26-1/2" (67.3cm)	10-5/8" (26.9cm)	click for prices

* Note: you will lose the thickness of the blade when cutting to wrap an existing column

All prices & specifications subject to change without notice, Final products & Measurements may vary from this brochure



www.imperialproductions.com 800-399-7585

Imperial Productions & Distribution Inc
email sales@imperialproductions.com

Toronto / New York

copyright 2016 MRDCI All Rights Reserved

Vol 8: Sept-18

Standard Load Bearing Plugs for Hollow Bases

PLUGS FOR HOLLOW TUSCAN BASES

Item #	for Base	Diameter x Height
IPPLUG100	IPTB107	5-3/4" x 4-3/8"
IPPLUG101	IPTB500	5-3/4" x 3-1/4"
IPPLUG102	IPPCTB06	6" x 3"
IPPLUG103	IPMRD0600	6-1/4" x 3"
IPPLUG104	IPTB109	7-1/4" x 4-3/8"
IPPLUG105	IPPCTB08NT	7-3/8" x 4-1/8"
IPPLUG106	IPPCTB08	7-7/16" x 4-1/8"
IPPLUG108	IPTB502	7-1/2" x 3-1/4"
IPPLUG110	IPTB501	8" x 3-1/4"
IPPLUG111	IPTB100	8-1/8" x 4-3/8"
IPPLUG113	IPTB104	8-1/4" x 4-1/4"
IPPLUG114	IPMRD0601	8-3/8" x 4"
IPPLUG115	IPTB101	9-3/8" x 5-1/4"
IPPLUG116	IPTB112	9-3/8" x 4-1/16"
IPPLUG117	IPPCTB10NT	9-3/8" x 5-5/8"
IPPLUG120	IPTB504	9-1/2" x 3-1/4"
IPPLUG121	IPTB105	9-9/16" x 4-3/8"
IPPLUG122	IPPCTB10	9-5/8" x 5-5/8"
IPPLUG123	IPTB503	9-7/8" x 3-1/4"
IPPLUG125	IPTB506	10-1/4" x 3-1/4"
IPPLUG126	IPMRD0602	10-1/2" x 4-1/2"
IPPLUG130	IPPCTB12NT	11-1/2" x 6-5/16"
IPPLUG131	IPPCTB12	11-1/2" x 6-5/16"
IPPLUG133	IPTB102	11-3/4" x 6-3/8"
IPPLUG134	IPTB106	11-3/4" x 6-3/16"
IPPLUG136	IPTB505	12-1/4" x 3-1/4"
IPPLUG137	IPMRD0603	12-3/8" x 5"
IPPLUG138	IPPCTB14NT	13-1/2" x 7-1/4"
IPPLUG139	IPTB103	13-3/4" x 6"
IPPLUG140	IPPCTB14	13-7/8" x 7-1/4"
IPPLUG141	IPTB507	13-15/16" x 3-1/4"
IPPLUG143	IPTB113	14-3/4" x 7-13/16"
IPPLUG146	IPPCTB16NT	15-1/2" x 8-1/8"
IPPLUG148	IPPCTB16	16" x 8-1/8"
IPPLUG149	IPPCTB18NT	17-3/8" x 8-1/8"
IPPLUG151	IPTB114	18" x 9-1/2"
IPPLUG152	IPTB116	18-1/4" x 9"
IPPLUG153	IPPCTB20NT	19-5/8" x 7-1/4"
IPPLUG154	IPPCTB20	19-7/8" x 11"
IPPLUG155	IPTB111	20-1/2" x 9-1/8"
IPPLUG156	IPTB115	21" x 9-1/2"
IPPLUG157	IPTB118	21-1/4" x 9-3/8"
IPPLUG158	IPTB110	23-1/4" x 12-1/4"
IPPLUG159	IPPCTB24NT	23-5/8" x 7-1/4"
IPPLUG160	IPPCTB24	23-3/4" x 13-1/2"
IPPLUG161	IPTB108	25-3/4" x 7"
IPPLUG162	IPTB117	29-11/16" x 10"

Made from Laminated Pressure Treated Wood



PLUGS FOR HOLLOW ATTIC BASES

Item #	for Base	Diameter x Height
IPPLUG107	IPATTC100	7-9/16" x 5-1/4"
IPPLUG109	IPPCAB08	7-1/2" x 4-5/8"
IPPLUG112	IPATTC120	8-1/16" x 4-3/8"
IPPLUG118	IPATTC101	9-1/2" x 6-1/4"
IPPLUG119	IPPCAB10	9-5/8" x 5-5/8"
IPPLUG124	IPATTC121	9-15/16" x 5-1/2"
IPPLUG127	IPATTC102	11-1/4" x 6-1/4"
IPPLUG128	IPATTC103	11-1/2" x 7-1/4"
IPPLUG129	IPPCAB12	11-3/4" x 6-3/8"
IPPLUG132	IPATTC104	11-3/4" x 6-3/4"
IPPLUG135	IPATTC122	11-15/16" x 6-3/8"
IPPLUG142	IPPCAB14	14-1/8" x 8-3/8"
IPPLUG144	IPATTC105	14-7/8" x 6-3/4"
IPPLUG145	IPATTC106	15-1/4" x 11"
IPPLUG147	IPATTC107	16-1/2" x 11"
IPPLUG150	IPPCAB18	17-3/8" x 9-1/4"

Install Tips:

Erect 2 jack posts on either side of the column to support it temporarily. Always consult a structural engineer before removing columns.

Installing Plugs:

- 1) Cut away rotted column bottom
- 2) Insert Load Bearing Plug into the hollow base
- 3) Slide in Plug & Base under the shaft
- 4) Lower Column onto the Load Plug

Optional Column Extensions

If more of the column is rotted, send us a drawing of the column extension
See page 211 Preparations



Martin Richards Design..

COLLECTION

* For load bearing plugs for columns confirm loads with your structural engineer

* All prices & specifications subject to change without notice, Final products & Measurements may vary from this brochure



www.imperialproductions.com 800-399-7585

Imperial Productions & Distribution Inc
email sales@imperialproductions.com

Toronto / New York

copyright 2016 MRDCI All Rights Reserved

Vol 8: Sept-18